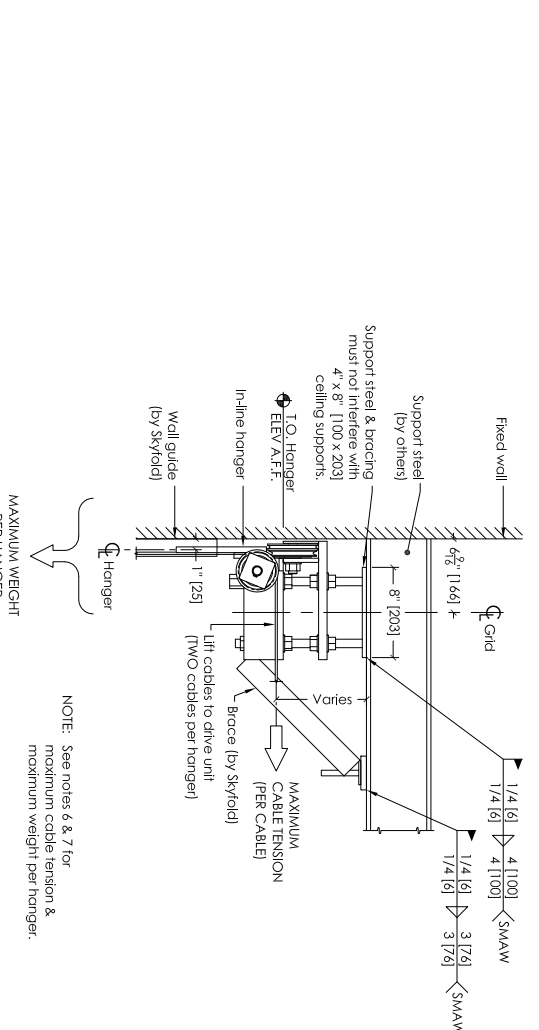
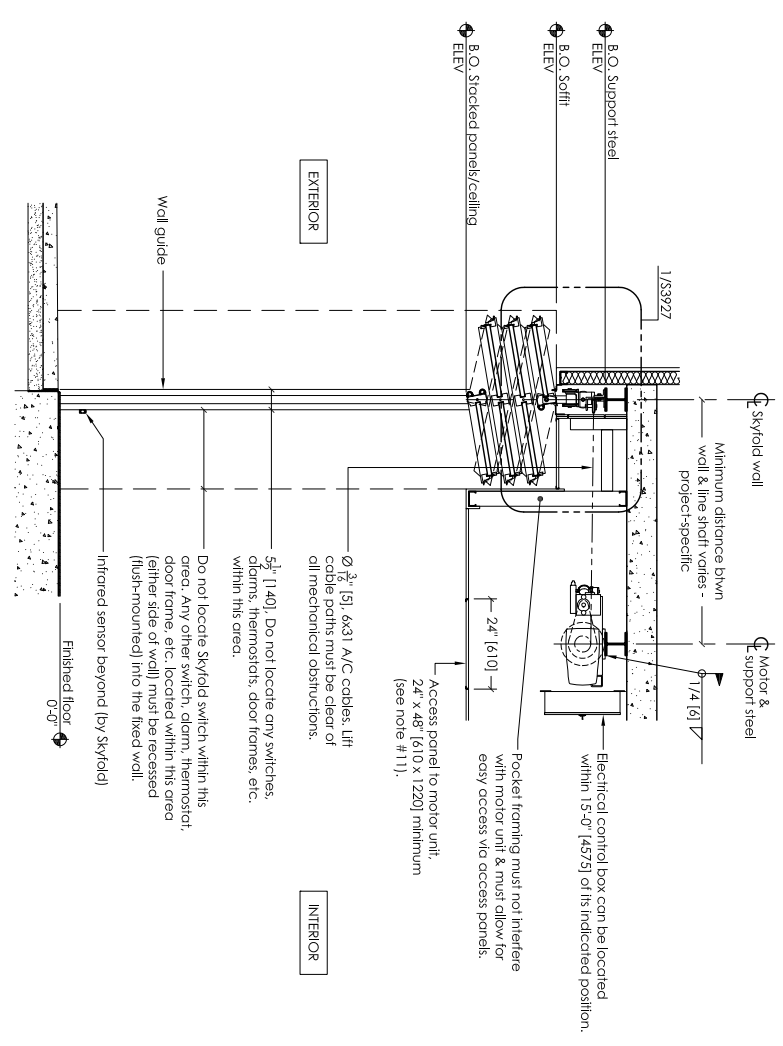


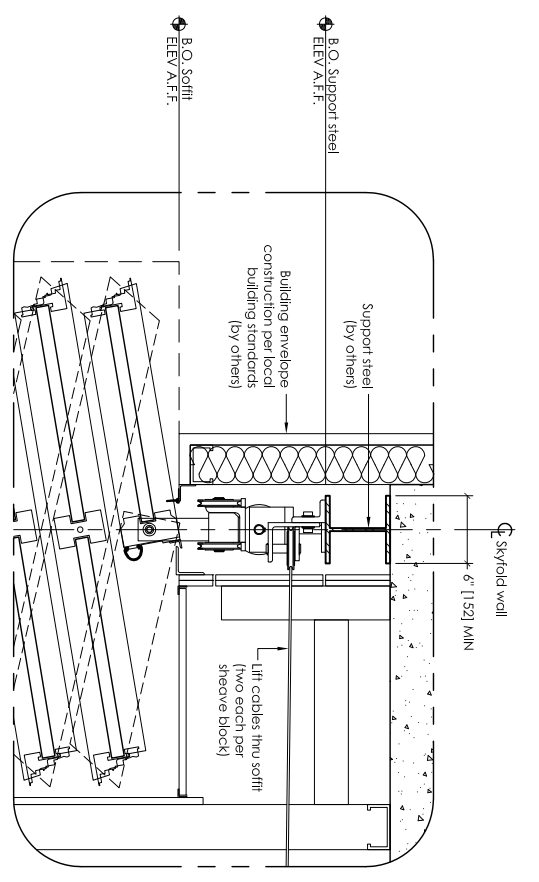
PLAN
SCALE: 3/8" = 1'-0"



SECTION - LOADS @ HANGERS
SCALE: 1/2" = 1'-0"



A | SECTION - WALL UP
SCALE: 1/2" = 1'-0"



1 | DETAIL - SKYFOLD MECHANICAL
SCALE: 1/2" = 1'-0"

NOTES TO G.C.

- Give special attention to any obstructions to calling pockets & cables (i.e. ducts, sprinkler pipes, drain pipes, electrical conduits, etc.).
- Support steel (6" [152] minimum width) to be supplied & installed by others. Alternate steel support to be approved by Skyfold.
- Support steel above the wall along its cast must be parallel to the floor within 1/2" [12.7] for the entire length of the wall (this includes loaded deflection).
- Attachment details of support steel to structure to be designed by others & must not interfere with Skyfold hangers or motor unit or lifting cables.
- Structural steel support & bracing must not interfere with motor mounts or ceiling supports.
- Sprayed-on fireproofing (mineral wool & cement) is not recommended for use on the steel support to which Skyfold is attached. An intumescent coating or film is preferred. Local building codes must be respected. Fireproofing is by others.
- Approximate weight of wall: XXXX lbs. [XXXX Kg.]
Maximum weight per hanger: XXX lbs. [XXX Kg.]
Maximum cable tension: XXX lbs. [XXX N] (two cables per hanger)
- Specified electrical: 208 V.A.C. 3Ø, 60 Hz.
*** POWER MUST BE AVAILABLE AT TIME OF INSTALLATION. THE ELECTRICAL CONTROL BOX IS TO BE MOUNTED BY THE ELECTRICAL CONTRACTOR.**
- 24 volt key switch control & box to be installed by electrical contractor as per standard light switch. Box to be fitted or detailed key switch location with suitable cable run back through ceiling void to control box position, including sufficient space to allow connection. Key switch is supplied by Skyfold.
- Motor size: Varies - project-specific.
Full load amp: Varies - motor-specific.
- Skyfold requires one access panel, 24" x 48" [610 x 1220], in acoustic ceiling directly below cable drum for installation & maintenance of system. Suspended ceiling tiles directly below & along the length of the line shaft are preferred. Access to electrical control box & drive unit is essential.
- Drive unit to be installed prior to construction of soffit. All soffit construction (gypsum, suspended ceiling tile, framing, etc.) is by others.
- Dimensions in [] are in millimeters (mm) unless noted otherwise.
- Do not scale from this drawing. All dimensions must be verified on site.

LEGEND

- KEY SWITCH CONTROL
- CEILING SUPPORT & HANGER
- CEILING ACCESS PANEL

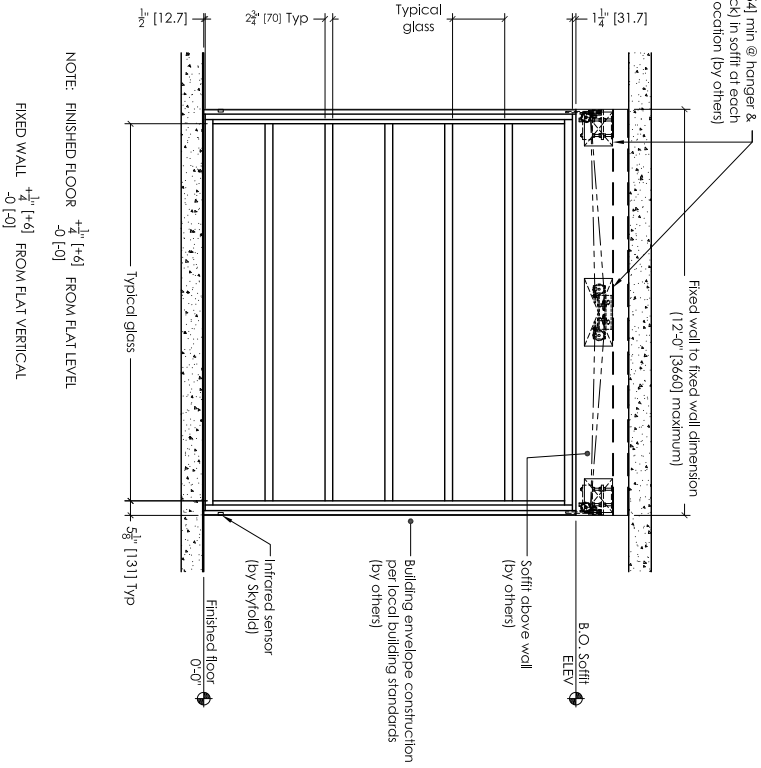
PROJECT NAME
Address 1
Address 2

X @ X-X" [XXXX] x X-X" [XXXX] Finished ceiling
PLAN & MECHANICAL DETAILS

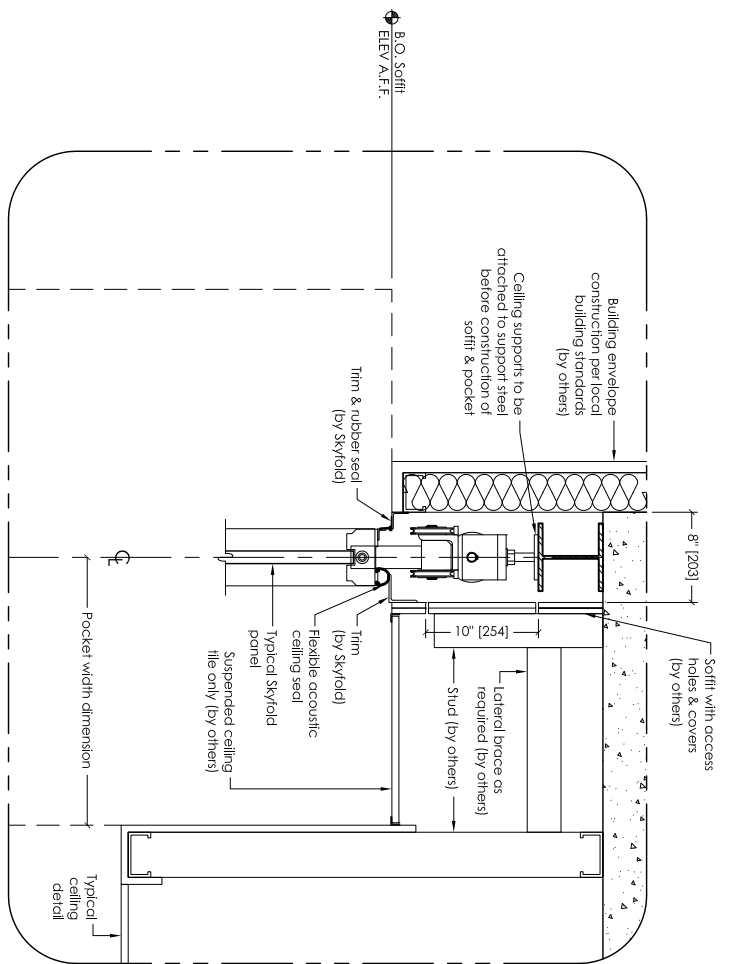
DATE	BY	APPROVED BY	DATE
SKYFOLD PROJECT NO.	SCALE	SHEET NO.	1 OF 3
DRAWING TITLE	AS NOTED	REVISION	0

THIS DRAWING IS INTENDED AS A GUIDE. IN ALL CASES SKYFOLD SHOP DRAWINGS SPECIFIC TO EACH PROJECT ARE REQUIRED FOR FINAL BUILD TO DIMENSIONS.

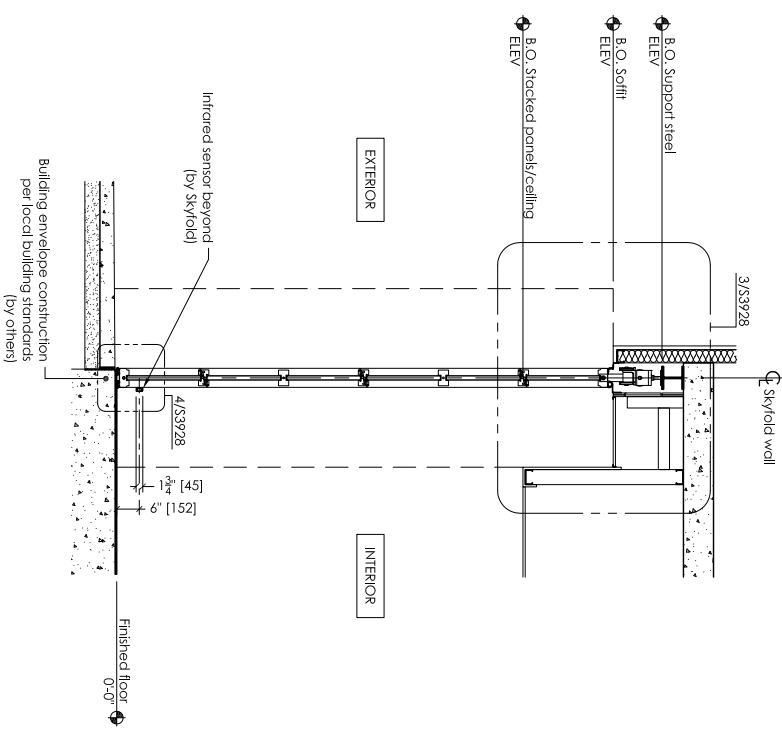
Access hole & cover (12" x 10" [300 x 254] min @ hanger & 24" x 10" [610 x 254] min @ sheave block) in soffit at each hanger/sheave block location (by others)



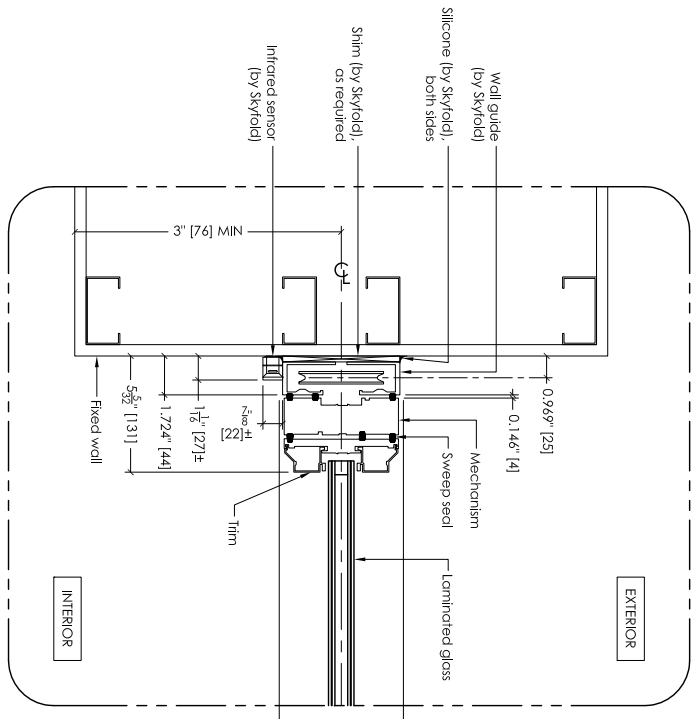
C | ELEVATION - WALL DOWN
S3927 | SCALE: 3/8" = 1'-0"



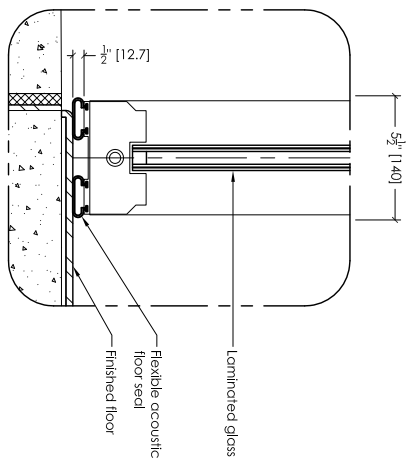
3 | SOFFIT DETAIL
S3928 | SCALE: 1/2" = 1'-0"



D | SECTION - WALL DOWN
S3927 | SCALE: 1/2" = 1'-0"



2 | END SEAL DETAIL
S3927 | SCALE: 3" = 1'-0"



4 | FLOOR SEAL DETAIL
S3928 | SCALE: 3" = 1'-0"

NOTES TO G.C.

1. Give special attention to:
 - Any obstructions to ceiling pockets & cables (i.e. ducts, sprinkler pipes, drain pipes, electrical conduits, etc.).
 - Tolerances of fixed walls & finished floor.
 - Removable ceiling tile for top of pocket.
2. Panel finish: 3/8" [9.5] clear glass + 1/32" [0.76] film + 1/8" [3] clear glass + 1/2" [12.7] spacer + 3/8" [9.5] clear glass + 1/32" [0.76] film + 1/8" [3] clear glass.
3. Skyfold requires one access panel, 24" x 48" [610 x 1220], in acoustic ceiling directly below cable drum for installation & maintenance of system. Suspended ceiling tiles directly below & along the length of the line shaft are preferred. Access to electrical control box & drive unit is essential.
4. Drive unit to be installed prior to construction of soffit. All soffit construction (gypsum, suspended ceiling tile, framing, etc.) is by others.
5. The floor underneath the wall along its axis must be flat to within 1/4" [6] over the entire length of the wall. A peak to valley undulation of ± 1/4" [6] must not be closer together than 24" [610]. A peak to valley undulation of ± 3/8" [9.5] must not be closer together than 12" [300].
6. Dimensions in [] are in millimeters (mm) unless noted otherwise.
7. Do not scale from this drawing. All dimensions must be verified on site.

THIS DRAWING IS INTENDED AS A GUIDE. IN ALL CASES SKYFOLD SHOP DRAWINGS SPECIFIC TO EACH PROJECT ARE REQUIRED FOR FINAL BUILD TO DIMENSIONS.

Project: _____

Contractor: _____

Address 1: _____

Address 2: _____

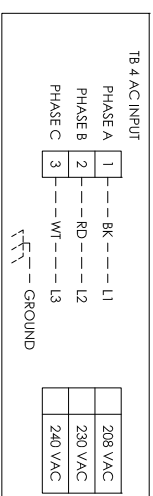
PROJECT NAME

PANEL & SOFFIT DETAILS

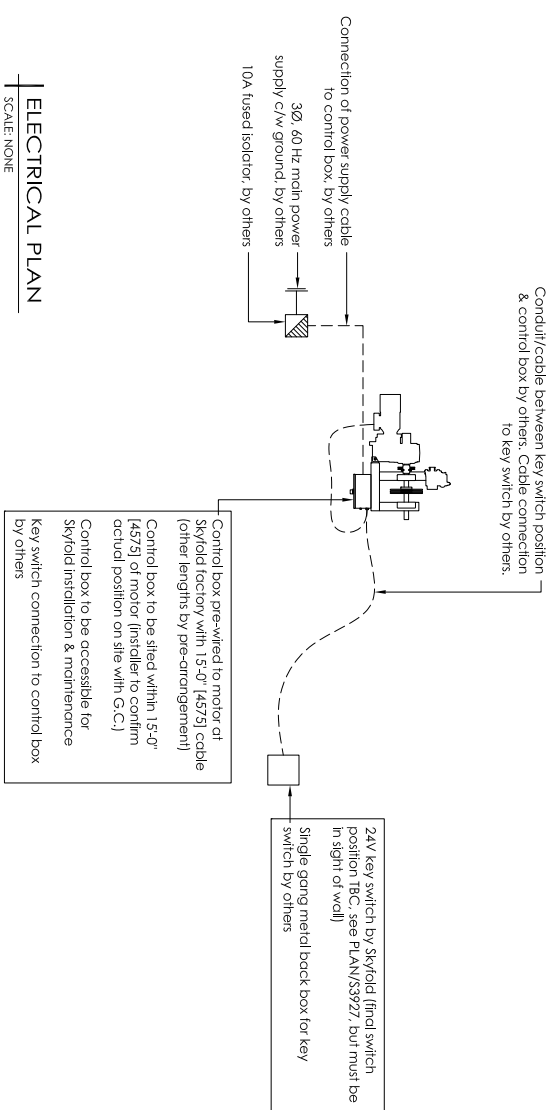
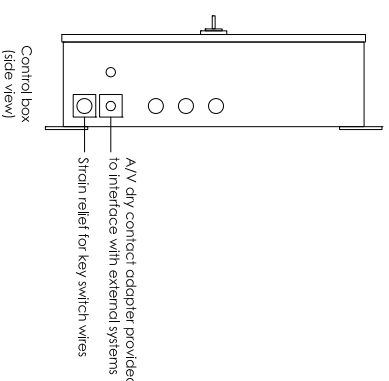
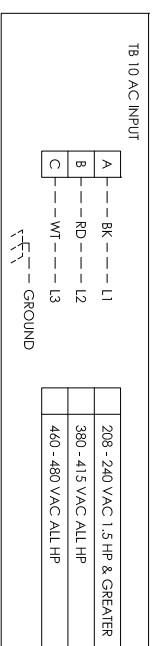
X @ X-X" [XXXX] x X-X" [XXXX] Finished ceiling

DATE	BY	APPROVED BY	SCALE	SHEET NO.	TOTAL SHEETS
_____	_____	_____	AS NOTED	2 OF 3	3
_____	_____	_____	AS NOTED	2 OF 3	3
_____	_____	_____	AS NOTED	2 OF 3	3

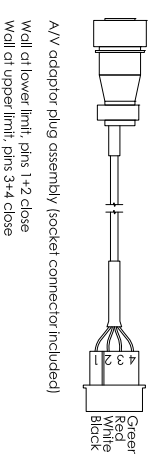
AC POWER INPUT: 208 - 240 VAC 1 HP & LESS



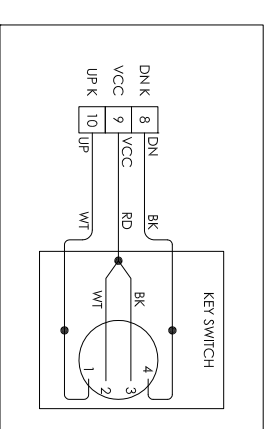
AC POWER INPUT: 208 - 240 VAC 1.5 HP & GREATER & 380 VAC & GREATER



ELECTRICAL PLAN
SCALE: NONE



WIRING DIAGRAM FOR KEY SWITCH



NOTES TO G.C.

- Specified electrical: 208 VAC, 3Ø, 60 Hz.
* POWER MUST BE AVAILABLE AT TIME OF INSTALLATION.
THE ELECTRICAL CONTROL BOX IS TO BE MOUNTED BY THE ELECTRICAL CONTRACTOR.
- 24 volt key switch control & box to be installed by electrical contractor as per standard light switch. Box to be fitted at desired key switch location with suitable cable run back through ceiling void to control box position including sufficient space to allow connection. Key switch is supplied by Skyfold.
See PLAN/S3927 for key switch position.
- Motor size: Varies - project-specific.
Full load amp: Varies - motor-specific.
- Dimensions in [] are in millimeters (mm) unless noted otherwise.

THIS DRAWING IS INTENDED AS A GUIDE. IN ALL CASES SKYFOLD SHOP DRAWINGS SPECIFIC TO EACH PROJECT ARE REQUIRED FOR FINAL BUILD TO DIMENSIONS.

Project: PROJECT NAME
Address 1
Address 2

X @ X-X' [XXXX] x X-X' [XXXX] Finished ceiling
ELECTRICAL DETAILS

Author	Designer	Checker	Approver	Date
SKY-XXXX	SKY-XXXX	SKY-XXXX	SKY-XXXX	0
Scale: As noted	Sheet No: 3 of 3	Revision: 0	Drawing Title: S3929	